



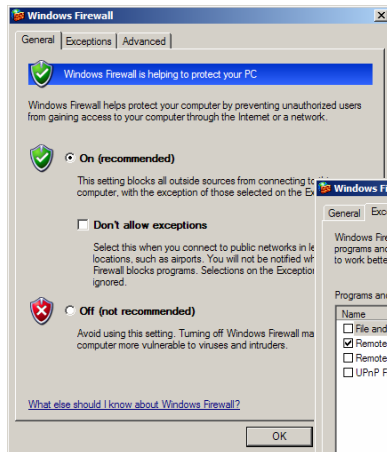
PATIENT MANAGEMENT PROGRAM

Setting Windows Firewall Exceptions for PMP SQL

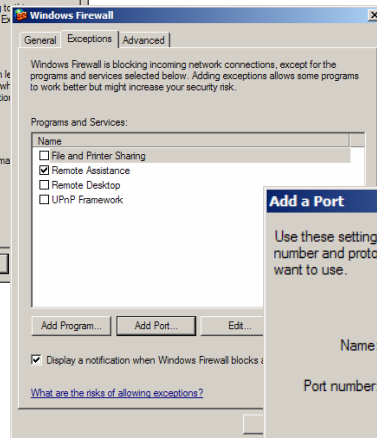
PMP SQL uses a protocol named TCP/IP to communicate to the database server. This type of protocol is typically used by programs to access the internet. PMP does not use the internet but firewalls recognize the TCP/IP protocol and may block access to PMP.

To set up exceptions so that Windows Firewall will not conflict with PMP functioning please follow these instructions.

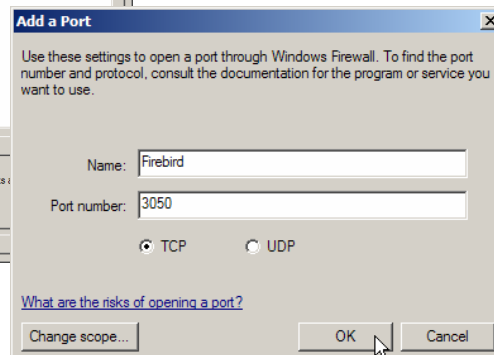
Go to Start, Control Panel. Locate and double click Windows Firewall.



Make sure the radio button is checked beside **On (recommended)**. Click the **Exceptions** tab at the top.



Click **Add Port**.



Type **Firebird** beside **Name**:. Type **3050** beside **Port number**:. Leave the checkmark beside **TCP**. Click **OK**.

Click **Add Program**. Locate and highlight **PMP SQL**. Click **OK**.

Click **OK** on the *Windows Firewall* screen. Close all remaining Windows.

