



Patient Management Program Setting Up Remote Access

September 2008

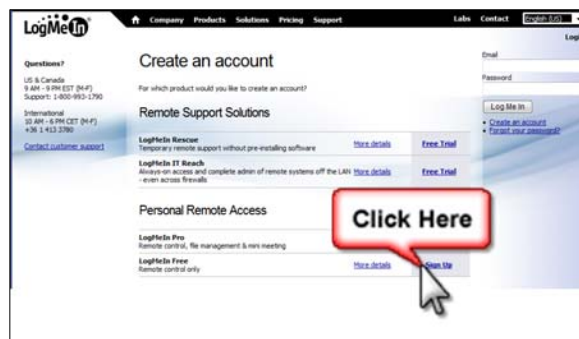
Installing LogMeIn®

Open your web browser and type www.logmein.com into the address line.

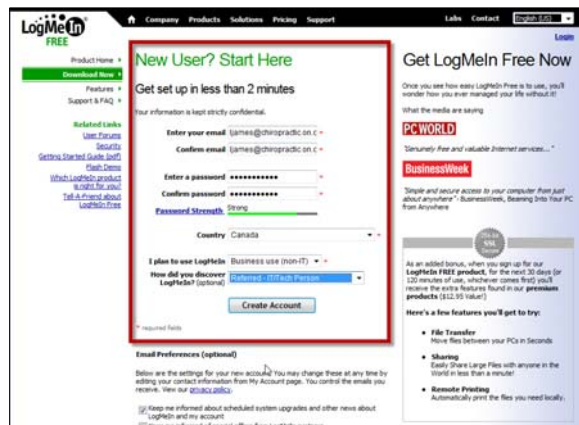
Click **Create an account.**



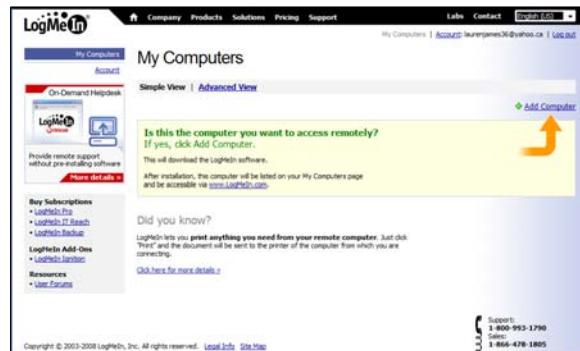
Beside **LogMeIn Free** click **Sign Up.**



Fill in all required fields and click **Create Account.**



Click **Add Computer**.



Click **Download Now**. Read the screen. Installation instructions are detailed.



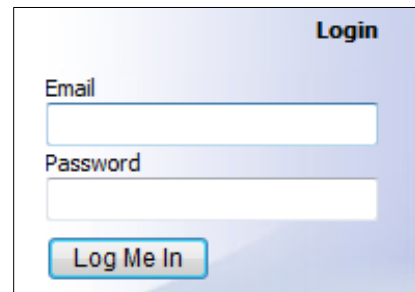
Click **Run, Run, Next, I Agree, and Finish**.

Complete the steps above on each computer that you would like to access remotely.

To Access Your Computers Remotely

Open your web browser and type www.logmein.com into the address line.

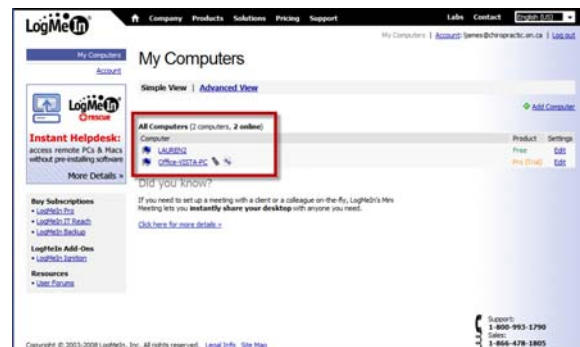
Type your email, password, and click **Log Me In**.



You will now see a list of all computers that you have LogMeIn® installed on them.

Choose the computer to access. Read and follow any instructions that appear from your specific windows setup or virus firewall.

When prompted choose the **Remote Control** option.



Note: Refer to the *Getting Started Guide* and *User Guide* which can be found in the *Help* section for assistance.